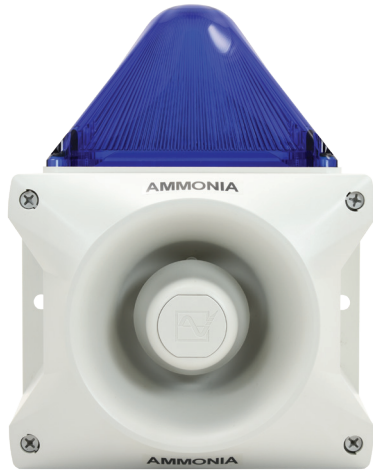


# SHA-PAX

## High Output Horn/Strobe



### Key Features

- IP66 Weatherproof design for outdoor or washdown installations
- Available for 120VAC or 24VDC
- 110 dB horn
- Separate horn and strobe circuits allow for multiple wiring configurations
- High intensity intermittent Xenon strobe flash
- Blue, amber, and red strobe lenses available
- 80 Field selectable tones - with 4 inputs to control 4 different tones
- 360° visible field for strobe
- Labeled for ammonia, custom labels available upon request
- 2-year warranty

High output horn with strobe in a weatherproof package.

The SHA-PAX horn/strobe is designed to provide audible/visual signal for life safety and property protection. The SHA-PAX is available in both 120VAC and 24VDC versions, and is listed with UL, cUL, and CE.

The SHA-PAX features a 110dB horn, and can be wired with the horn and strobe operating simultaneously, or independently of each other. There are 80 field selectable tones for the horn, and the strobe is visible from 360°.

The SHA-PAX is housed in a UV resistant Polycarbonate/ABS enclosure, able to withstand weather and washdown environments from -40°F to 130°F.

## SPECIFICATIONS

Due to ongoing research and product improvement, specifications are subject to change

**OPERATING TEMPERATURE:** -40°F to +130°F

**SOUND OUTPUT:** 110 dB

**FLASH RATE:** 1 flash per second (1 Hz)

**FLASH ENERGY:** 10 Joules

**POWER:** 24 VDC or 120 VAC (specify)

**MATERIAL:** UV resistant Polycarbonate/ABS

**PROTECTION DEGREE:** IP 66

**CURRENT DRAW:** 1040 mA @ 24VDC / 450 mA @ 120 VAC

**DIMENSIONS:** 10.6" x 8.4" x 6.1"

**LISTING:** UL, cUL, CE

## Configurations

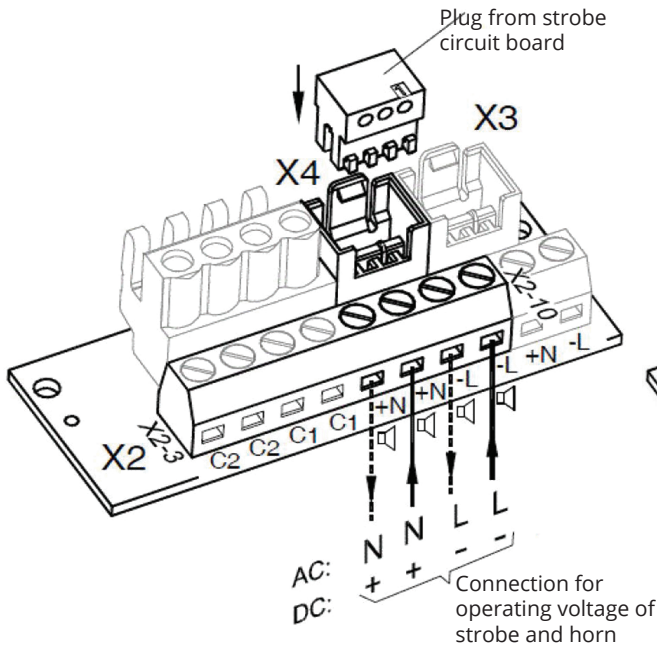
All units labeled "Ammonia" unless otherwise specified.

**Order #:** [SHA-PAX-110-120-Blue](#) (110dB | 120VAC | Blue)  
[SHA-PAX-110-120-Red](#) (110dB | 120VAC | Red)  
[SHA-PAX-110-120-Amber](#) (110dB | 120VAC | Amber)

[SHA-PAX-110-24-Blue](#) (110dB | 24VDC | Blue)  
[SHA-PAX-110-24-Red](#) (110dB | 24VDC | Red)  
[SHA-PAX-110-24-Amber](#) (110dB | 24VDC | Amber)

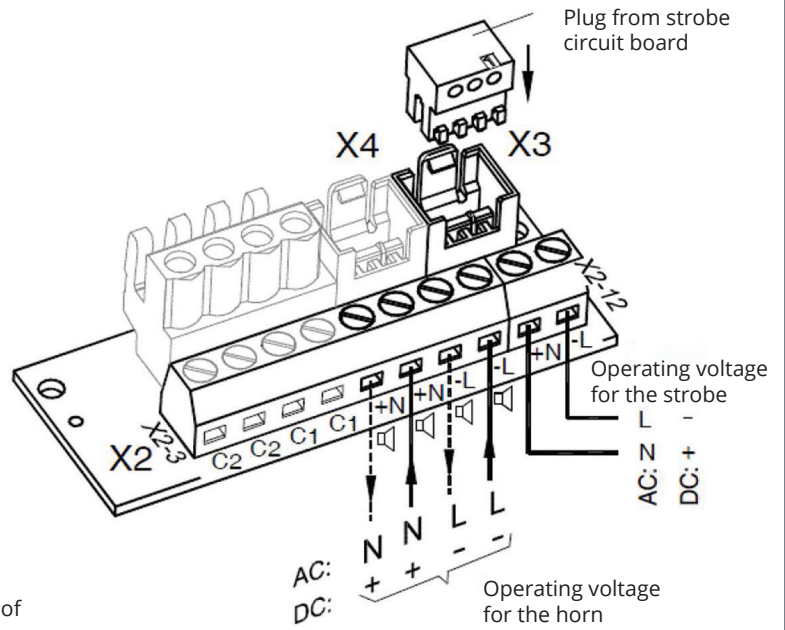


Terminal for operating voltage - Sounder-beacon combination:



**Figure 1**

Strobe and horn operate together (default setting)



**Figure 2**

Strobe and horn operate independently

